

EC MAX[®]

Electronically Commutated Motor

**NEW
INNOVATION**

THE MOTOR
THAT REPLACES
100s OF
DIFFERENT
MODELS!



**1/3
HORSE POWER**

**3/4
HORSE POWER**

**1
HORSE POWER**

**1/2
HORSE POWER**

A solution from

Packard
Supplying HVACR solutions with your needs in mind.

Electronically Commutated Direct Drive Blower Motors

Features

- High Efficiency ECM: Up to 80% Efficient
- Replaces either PSC or X13 model of equivalent HP
- Dual Voltage Design: Replace 115 or 230V with one motor
- Wiring harness and simple installation guide included
- Rotation Sensing Technology
 - Automatically selects rotation upon first start up
- 45" wiring harness
- Easy to install
- Internal MOV (Metal Oxide Varistors) surge protector



EC Max is a constant torque motor and does not replace variable speed or programmable motors.

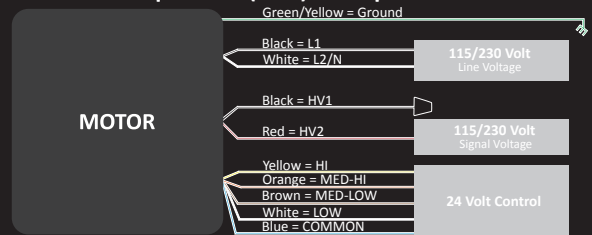
Item ID	H.P.	Volts	RPM	Amps	Hertz	Shaft Dimension (in.)	Length Less Shaft (in.)	Motor Type
46013	1/3	115/230	1075	5.0/3.0	60/50	1/2 x 5	6 3/8	ECM
46012	1/2	115/230	1075	6.7/4.0	60/50	1/2 x 5	6 3/8	ECM
46034	3/4	115/230	1075	8.2/4.9	60/50	1/2 x 5	7 5/8	ECM
46001	1	115/230	1075	11.0/6.7	60/50	1/2 x 5	7 5/8	ECM



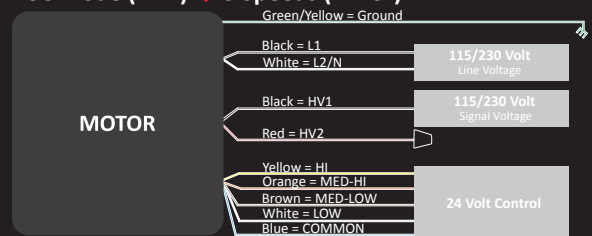
EC MAX[®]
The NEW Electronically Commutated Motor!

Wiring Diagram

Constant Torque ECM (HV2) → 4 Speeds



PSC Mode (HV1) → 5 Speeds (4 + CF)



Corporate Headquarters and Distribution Center
2700 Barrett Lakes Blvd. NW, Suite 100
Kennesaw, GA 30144

Distribution Centers
2570 N. Shadeland Ave., Suite 103, Indianapolis, IN 46219
6151 W. Erie St., Chandler, AZ 85226

Customer Service
800.334.1769
customerservice@packardonline.com

Scan for
full product
details



Packard
Supplying HVACR solutions with your needs in mind.



Packard supplies to wholesale distribution only. Visit packardonline.com for more information on EC Max[®] products. **UL** US
All products supplied by Packard must be installed by a licensed contractor.